

Product Features:

Surface Layer TPU materials. Woven lines wear better. Coefficient of friction for more Balanced

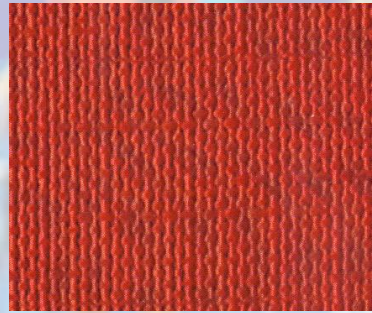
- Fixing way :**
- a) Movable type
 - b) Hot sol fixed type
 - c) All fixed type

The color : The mint Green and Maroon

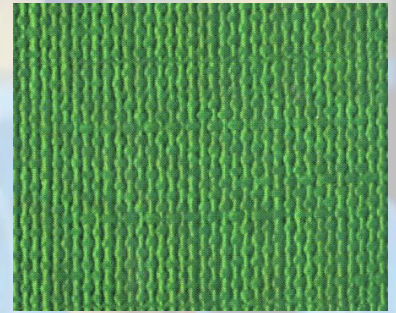
Certification : SGS environmental organizations through the international certification.

Grade : International environmental competition level

AY-P01: Table tennis Sports Flooring

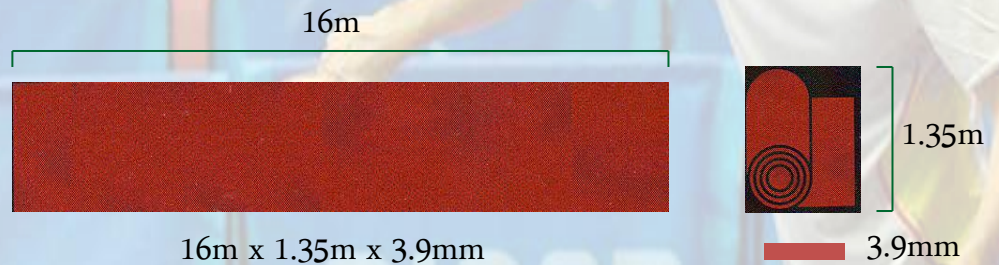


The Color: **Maroon**



The Color: **Mint Green**

Production Specification:



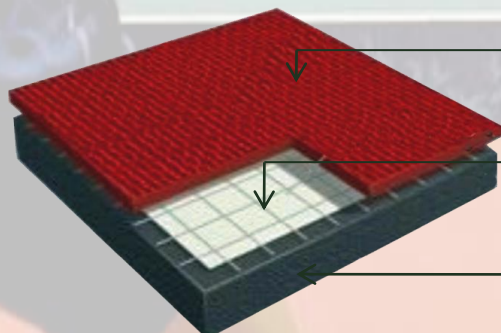
Conformation :

16m x 1.35m x 3.9mm

The first layer: Sward-shape surface, even and accordant, 100% TPU made up, And the best wear resistance and durability, friction index balanced, effective photometric. Sward-shape surface to provide the best for the athletes safety and comfort. 100% uniform friction, ensure that the foot of safety and freedom of movement, increased competitive level athletes.

The second layer: 1000D glass fiber layer, to ensure that movement of the products in the progress of stability and firm size ,and has played the role of automatic reinforcement.

The third layer: Single pore closing type construction, 100% TPU bottom. The impact of increased absorptive capacity of the athletes and the energy release in space, play a sound , easy to clean, inhibit bacteria.



Wave shape grain with PVC strength of 0.9mm

1000 D Glass Fiber Layer

Single pore closing type construction

100% purely PVC bottom layer of 3mm

Shiv Naresh Sports Pvt. Ltd